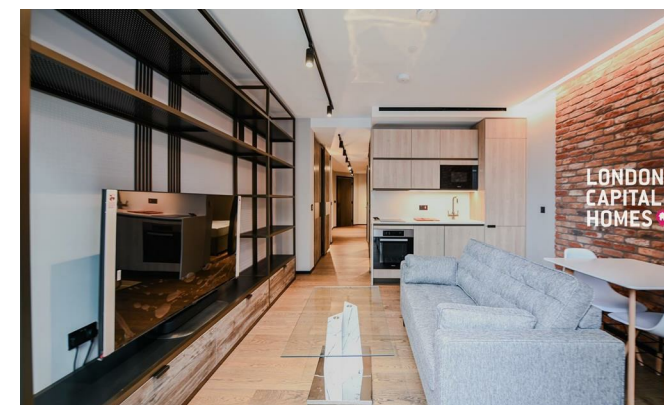
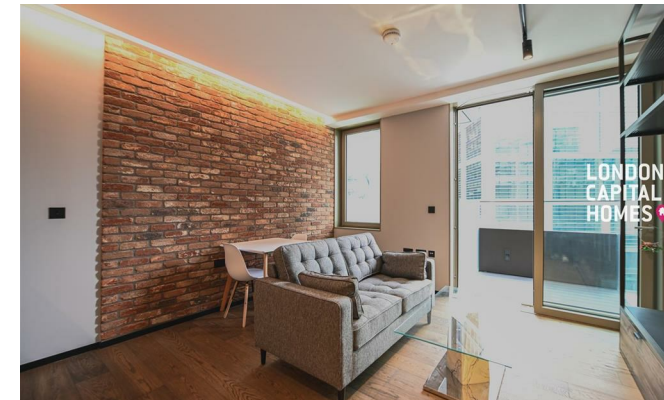


**LONDON
VICTORIA
GROUPS** 

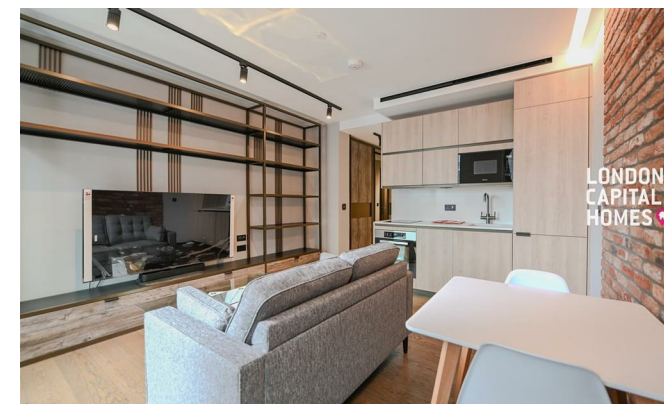


Stage Apartments, 22 Hewett Street

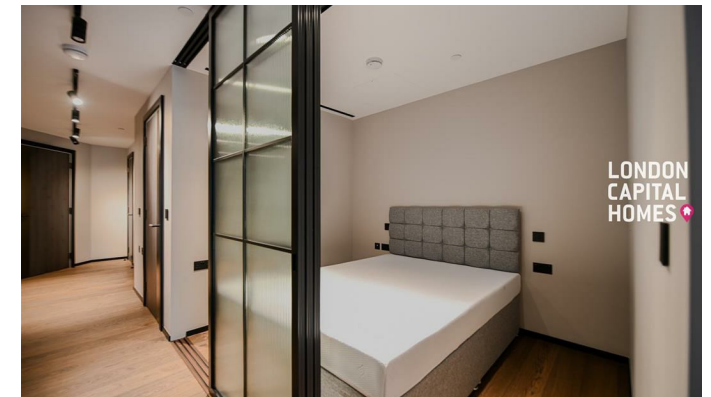
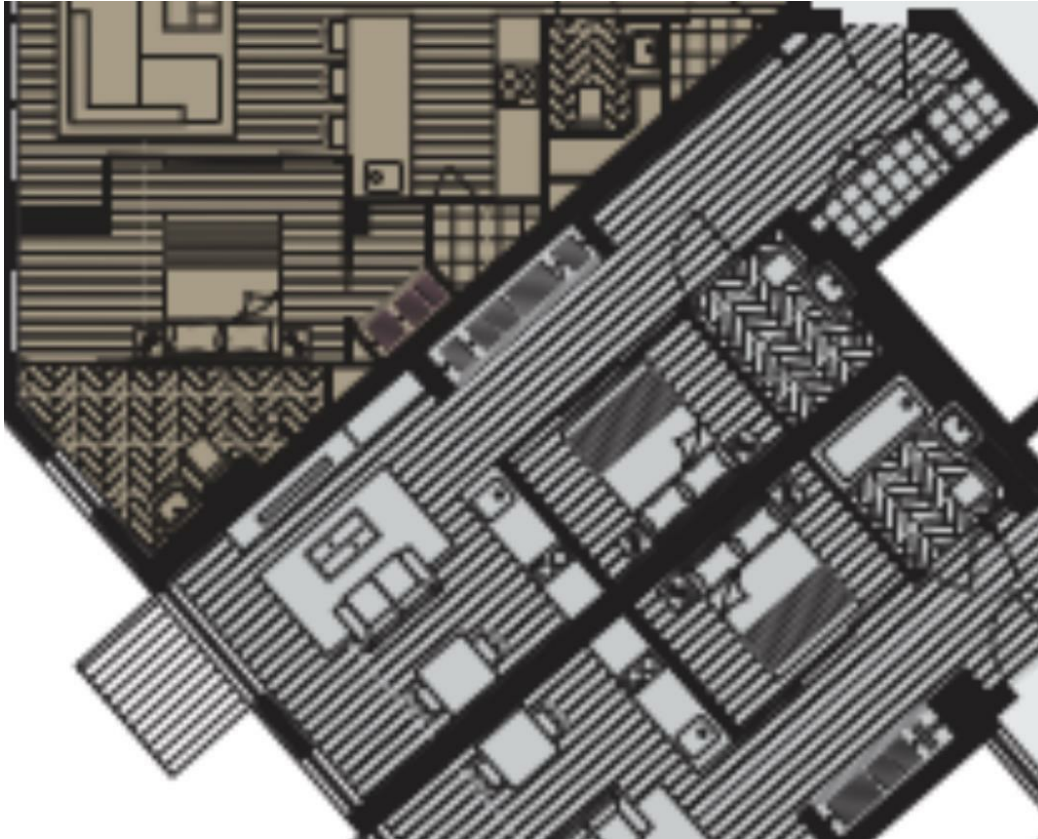
, London EC2A 3NL

- Studio
- Private Cinemas & Gym
- Executive Business Suites
- EPC-B
- 24-Hour Concierge
- Bowling & Sky Lounge
- Steps from Liverpool Street/Old Street Station
- CTB-E

£2,650 PCM



Local Authority **Hackney**
Council Tax Band **E**
EPC Rating **B**



London Office Office
Spaces Victoria, 25 Wilton Road, Pimlico,
London, SW1V 1LW

Contact
020 3084 3094
XL@londonvictoriagroups.co.uk
www.londonvictoriagroups.co.uk

Agents Note: Whilst every care has been taken to prepare these particulars, they are for guidance purposes only. All measurements are approximate and for general guidance purposes only and whilst every care has been taken to ensure accuracy, they should not be relied upon and potential buyers/tenants are advised to recheck the measurements.

LONDON
CAPITAL
HOMES

LONDON
CAPITAL
HOMES

LONDON
CAPITAL
HOMES